

CeraSyl™ Ceramic Filter Cartridges

Designed to remove suspended solids, pathogenic bacteria and cysts. The filter is silver impregnated to prevent bacteria growth and is self-sterilizing. The ceramic shell is manufactured to balance flow rate and consistent pore size in order to provide maximum filtration efficiency.

Maximum working pressure	125 psig
Maximum working temperature	100° F
Minimum working temperature	40° F
Recommended flow rate3 to 1.0 gpm (Slimline)
Recommended cleaning frequency.....	6 months or when flow rate is noticeably lower
Recommended change frequency	every 12 months

Contaminant Removal

The majority of pathogenic (disease causing) bacteria and cysts are larger than one micron. The pore size of the filter element is controlled so that it will remove all suspended matter larger than 0.3 microns.

Pathogenic bacteria

Cholera, Typhoid, Salmonella, Serratia, Fecal Coliform >99.99%

E. coli - 100%

Cysts

Cryptosporidium Parvum, Giardia Lamblia - 100% removal

Sediment

Down to 0.8 micron - 100%

0.3 - 0.5 micron >99.3%

Turbidity >99.7%

Metals

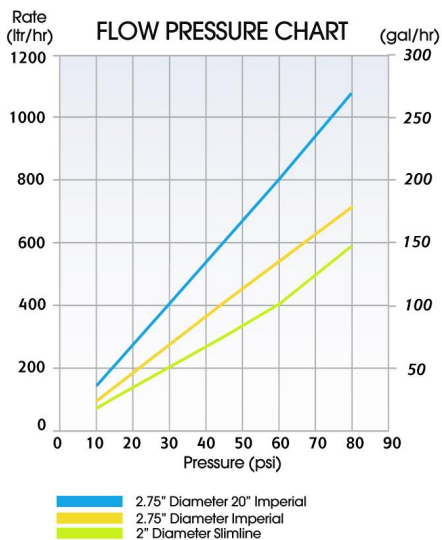
Iron, Aluminum

2" x 9.75" Slimline OBE

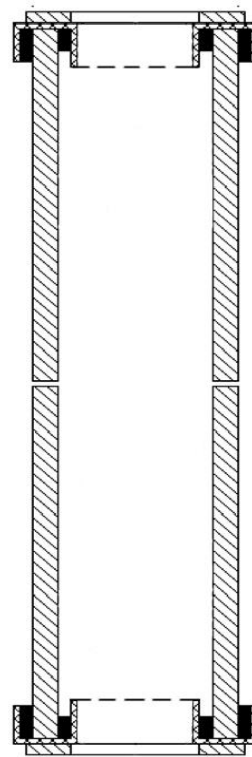
2.75" x 9.75" Imperial Cartridge

2.75" x 20" Imperial 20" Cartridge

Tested to meet NSF Standards 42 & 53.



Imperial 9.75" OBE



Slimline 9.75" OBE

